



HALT THE PAIN HALT THE OA RESTORE THE MOTION

"None of the patients in the inlay group showed progression of tibiofemoral OA. In contrast, the onlay group showed significant progression... with 53% of the patients showing progression of medial and/or lateral tibiofemoral OA."¹

"At 5 year follow-up...no significant progression of tibiofemoral OA was observed"²

The Next Wave in Patellofemoral Arthroplasty

The **Arthrosurface Patellofemoral Arthroplasty Systems** utilize the inherent advantage of its proprietary Inlay Technology to address the full treatment spectrum of patellofemoral pathology including:

- Isolated PF Arthrosis and Arthritis
- PF Malalignment
- PF Instability
- Dysplasia

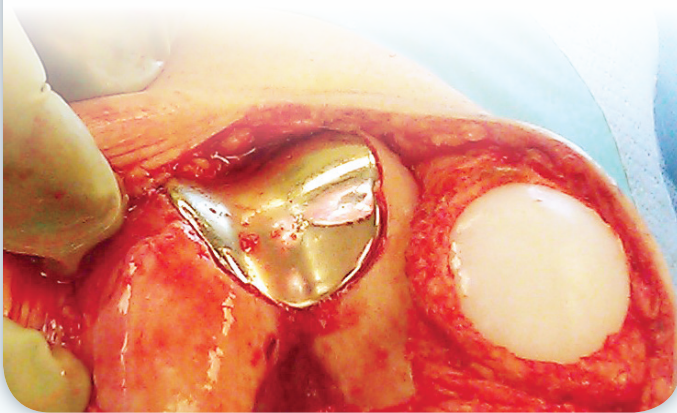


1. Feucht MJ, Cotic M, Beitzel K et al (2017) A matched-pair comparison of inlay and onlay trochlear designs for patellofemoral arthroplasty: no differences in clinical outcome but less progression of osteoarthritis with inlay designs. *Knee Surg Sports Traumatol Arthrosc* 25:2784–2791
2. Imhoff AB, Feucht MJ, Bartsch et al (2018) High patient satisfaction with significant improvement in knee function and pain relief after mid-term follow-up in patients with isolated patellofemoral inlay arthroplasty. *Knee Surg Sports Traumatol Arthrosc*. DOI: 10.1007/s00167-018-5173-2

25 Different Patient Matched Curvature Options & 3 Footprints to Address any PF Pathology

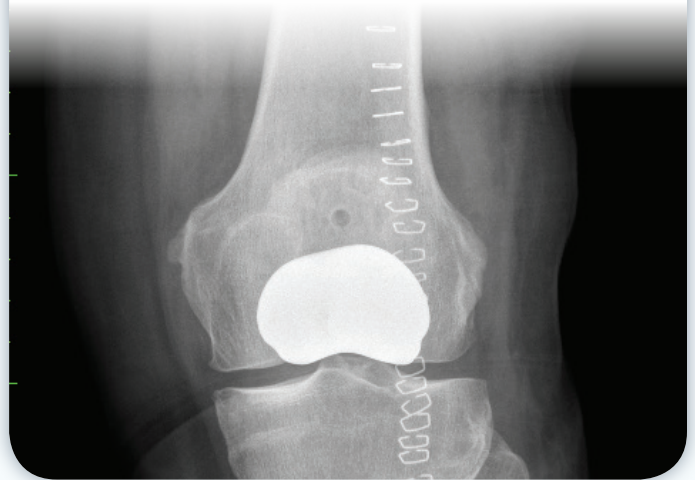
Full Coverage Inlay

Larger lateralized flange provides complete lateral and superior trochlear coverage. Maintains joint biomechanics, soft tissue tension & extensor mechanism.



Bone Preservation

Minimal bone removal benefits surgical revision to larger implants.



Motion Preservation

Active alternative to onlay arthroplasty and total knee replacement.



Patient Indications

Designed specifically for patients suffering from extensive patellofemoral pathology including chronic instability, and dysplasia.

