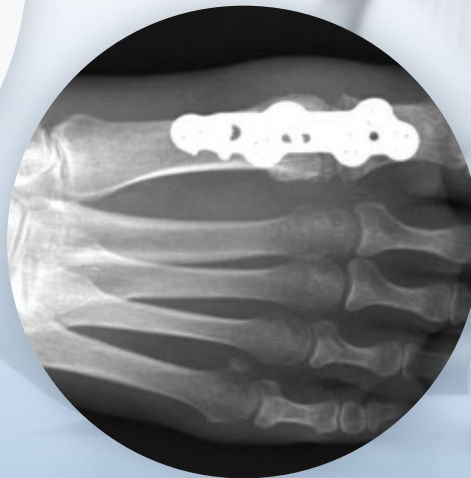
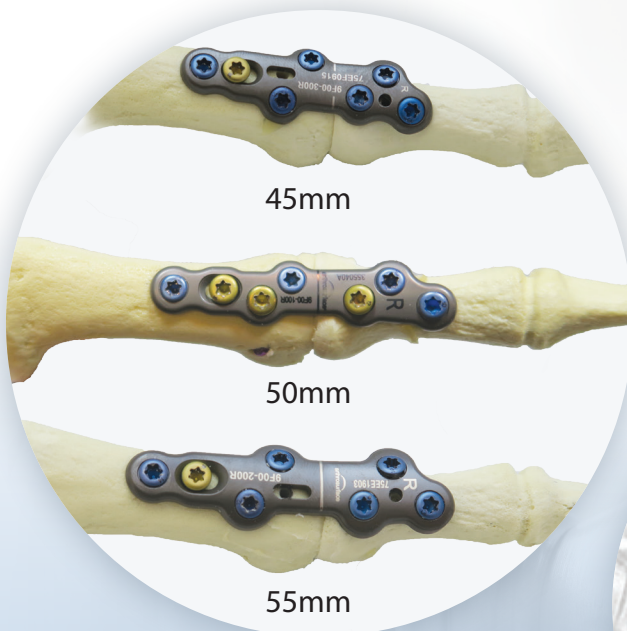


arthrosurface[®]

When it's your last move...



✓ Low profile & anatomically pre-contoured plates for ease of use and reproducible outcomes

✓ Latest technology in locked compression plates, combining the best of internal and external fixation

✓ High stiffness anodized plate for maximum stability

✓ Multiple plate sizes for primary or revision cases

Make Your Last Move Count

With the CheckMATE[®] plate you also get built in “Surgical Speed Elements”



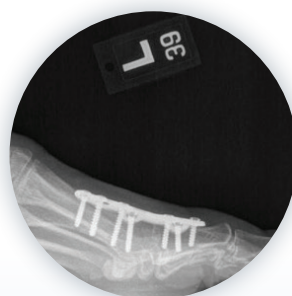
Custom low profile elevator to gain exposure of metatarsal head & phalangeal base. Includes built in templates for sizing purposes.



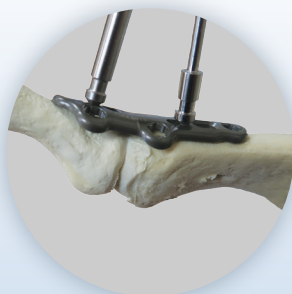
Plates are provided sterile, in Right & Left Configurations with lengths from 45mm to 55mm.



Metatarsal and Phalangeal Reamers designed to prevent over-reaming and shortenting of bones



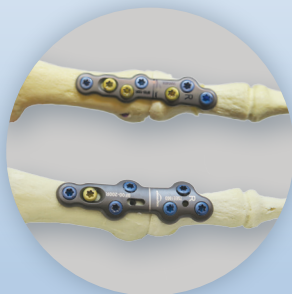
3.0mm and 3.5mm bailout screws are available in lengths ranging from 8mm to 24mm.



Tack pins provide temporary fixation to stabilize bone plate over the MTP Joint



Compression clamp technology built into the plate allows up to 3mm compression across the MTP joint.



Multiple plate options with either a combination of locking and non-locking holes or all-locking variable angle holes for primary or revision cases.



Variable angle locking holes allow desired orientation of screw placement.