



# *Natural* **Four-Corner Fusion**

## **Deliver the Benefits of Bone with The OsteoMATE™ Allograft Fusion System**

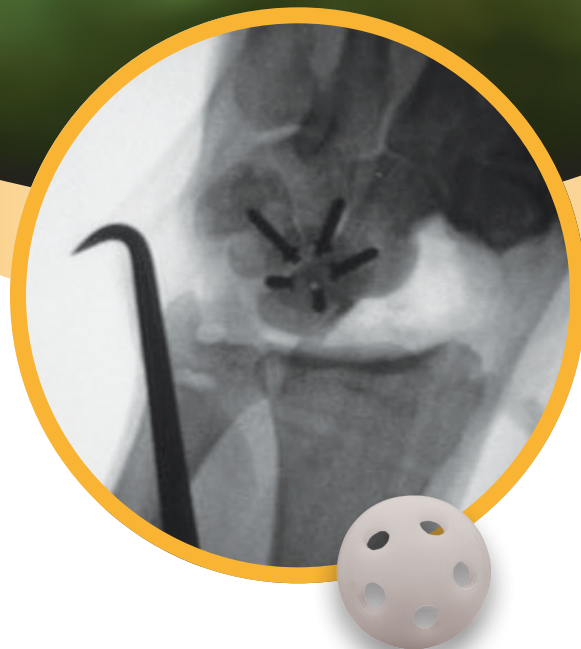
### **The First Four-Corner Arthrodesis System Comprised of Allograft Bone**

The OsteoMATE™ Allograft Fusion System uses a natural material to provide a scaffold for native bone to integrate into over time, establishing advantages over metal or plastic devices. In addition to the ability to bear the same load as native bone, the OsteoMATE allograft helps minimize stress shielding and provides radiographic visibility of the progression of joint fusion.

### **OsteoMATE Design**

Utilizing a pre-shaped/pre-drilled implant harvested from the tibia/femur, the OsteoMATE Allograft Fusion System's radiolucent circumferential design:

- ▶ Facilitates bony incorporation with 360-degree bone-against-bone transition area
- ▶ Reduces impingement with a streamlined fit that provides cortical allograft strength and stiffness during early rehabilitation.



# Natural Four-Corner Fusion

## Allograft Bone Fusion Complex

The OsteoMATE Allograft Fusion System creates an anatomic joint fusion complex of allograft tissue and native bone, and provides the following benefits:

- ▶ Modulus consistency between the OsteoMATE Allograft and native bone may result in a more streamlined force transmission at the joint site.
- ▶ Divergent angled pre-drilled screw holes facilitate dynamic compression of the bones being fused.

## Ease Of Use

The OsteoMATE Allograft Fusion System is easy to use, enabling rapid adoption with:

- ▶ Disposable instruments that are provided sterile to facilitate rapid room turnover.
- ▶ A dedicated, specialized reamer that allows visual confirmation of reaming depth, with a resultant reamed geometry matched to the allograft.
- ▶ A proprietary screw guide and guide pin to allow visual confirmation of screw placement into each bone.



## ORDERING INFORMATION

### BONE SCREWS (STERILE)

9A2D-B008 Snap-off Bone Screw, Ø 2.7 mm x 8 mm
9A2D-B010 Snap-off Bone Screw, Ø 2.7 mm x 10 mm
9A2D-B012 Snap-off Bone Screw, Ø 2.7 mm x 12 mm
9A2D-B014 Snap-off Bone Screw, Ø 2.7 mm x 14 mm
9A2D-B016 Snap-off Bone Screw, Ø 2.7 mm x 16 mm
9A2D-B018 Snap-off Bone Screw, Ø 2.7 mm x 18 mm
9A2D-B020 Snap-off Bone Screw, Ø 2.7 mm x 20 mm
9A2D-B022 Snap-off Bone Screw, Ø 2.7 mm x 22 mm
9A2D-B024 Snap-off Bone Screw, Ø 2.7 mm x 24 mm

### INSTRUMENTS (STERILE)

9K00-0100 Instrument Kit, Disposable, Ø 16 mm
9K00-0102 Instrument Kit, Disposable, Ø 20 mm

### ALLOGRAFT (PROVIDED STERILE IN SALINE)

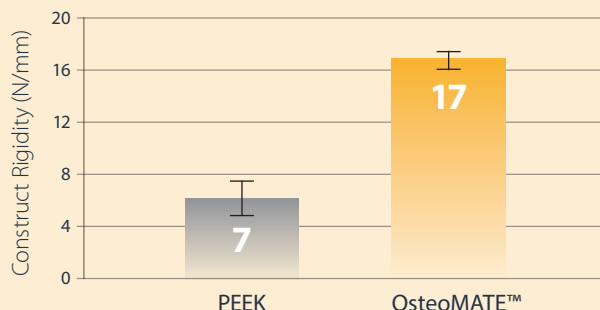
#### Wrist

8K00-0160 OsteoMATE Disk, Ø 16 mm
-----------------------------------

#### Foot

9K00-0160 OsteoMATE Disk Ø 16 mm
9K00-0200 OsteoMATE Disk Ø 20 mm

## PEEK IMPLANT VS. OSTEOMATE™ CONSTRUCT RIGIDITY



For more information,  
visit [www.arthrosurface.com](http://www.arthrosurface.com)  
or call 1.508.520.3003