

arthrosurface®

**ToeMATE**®  
Hammertoe Correction System

# A **STRONG** Step in the Right Direction

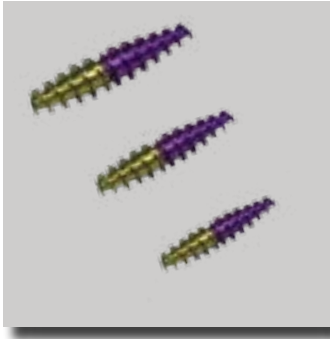
- ✓ PROVEN, STRONG & STABLE FIXATION
- ✓ QUICK & ACCURATE JOINT ALIGNMENT
- ✓ DISPOSABLE INSTRUMENT KIT

ToeMATE® is an easy to implant bone screw system intended for the correction of hammertoe deformity. It is provided in a complete packaged and sterile kit.

Visit [www.arthrosurface.com](http://www.arthrosurface.com) to learn more.



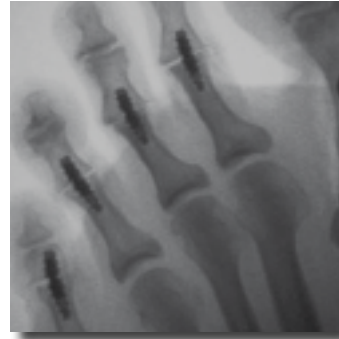
arthrosurface<sup>®</sup>



**Available in 3 Sizes:**

- Large - Ø 4.7mm
- Small - Ø 3.8mm
- X-Small - Ø 3.2mm

*\* Implants not shown to scale*

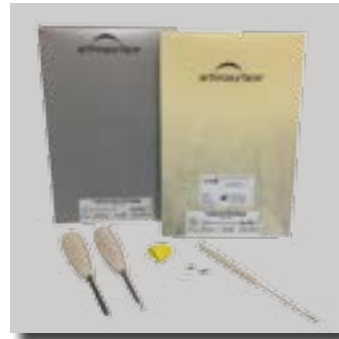


Implant components completely embedded in the phalangeal bones i.e. no implant exposure post-op avoids complications associated with pin tract infection.



All instruments hand driven. No power tools or connection required.

*\*Except for x-small*



All implants and instruments provided in a complete packaged & sterile kit. This eliminates missing instruments, incomplete trays and minimizes the risk of infection.

## Ordering Information

### Implant Package (LARGE - Ø 4.7mm)

9H00-T010 Screw, Proximal (Purple), L: 11mm  
Screw, Distal (Gold), L: 9mm  
Screw, Distal (Blue), L: 6.5mm  
Taper Lock Pin (0° & 10°)  
Transfer Guide Pin  
Delivery Tool (Bone White)  
Trepine

### Implant Package (SMALL - Ø 3.8mm)

9H00-T030 Screw, Proximal (Purple), L: 9mm  
Screw, Distal (Gold), L: 7mm  
Taper Lock Pin (0° & 10°)  
Transfer Guide Pin  
Delivery Tool (Blue)  
Trepine

### Implant Package (X-SMALL - Ø 3.2mm)

9H00-T050 Screw, Proximal (Purple), L: 9mm  
Screw, Distal (Gold), L: 7mm  
Taper Lock Pin (0° & 10°)  
Transfer Guide Pin  
Delivery Tool (Teal)

### Instrument Package (LARGE - Ø 4.7mm)

9H00-T020 Drill  
Screw Driver (Bone White)  
Thimble

### Instrument Package (SMALL - Ø 3.8mm)

9H00-T040 Drill  
Screw Driver (Blue)  
Thimble

### Instrument Package (X-SMALL - Ø 3.2mm)

9H00-T060 1.5mm Guide Pin  
Screw Driver (Teal)  
Thimble