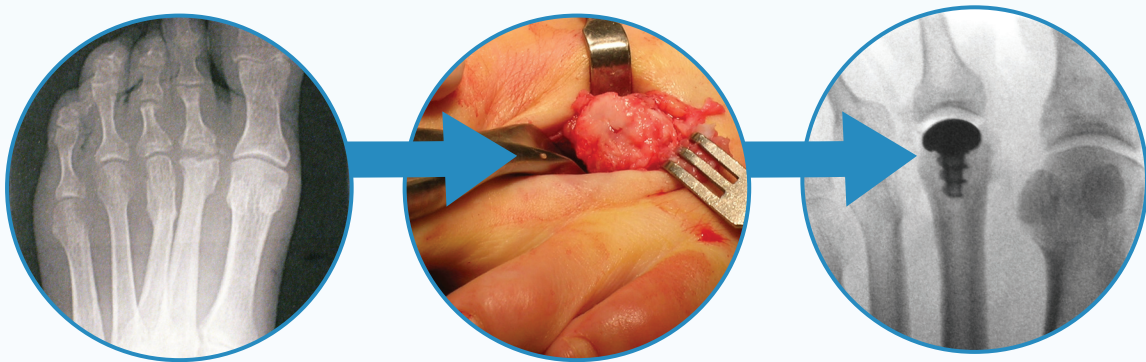




Motion in Every Step
Metatarso-Phalangeal Implant Systems

LESSER METATARSAL HEMIARTHROPLASTY

restore congruency



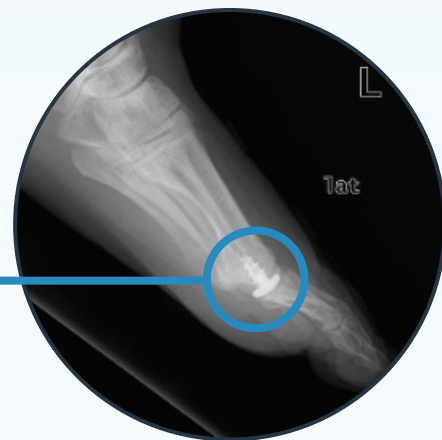
- ✓ Specifically designed for the lesser metatarsals
- ✓ Proven fixation provides a stable implant
- ✓ Minimal bone removal maintains future options
- ✓ Anatomic “Inlay” maintains the length of the 2nd metatarsal



“The Arthrosurface HemiCAP metatarsal head resurfacing implant technique is easy to perform and is minimally invasive with a low learning curve. This procedure allows removal of the diseased bone but at the same time requires minimal resection of sub-chondral bone and it preserves enough viable bone stock for an appropriate metatarsal parabola and for future treatment options if needed.”

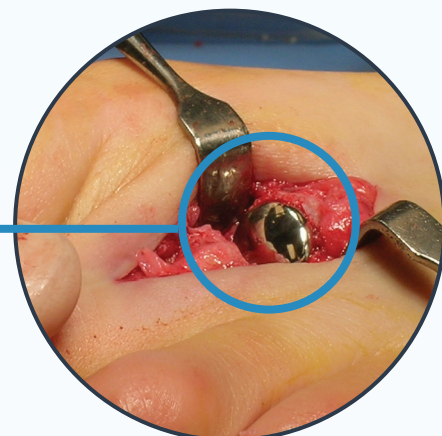
Proven 4th Generation Threaded Fixation versus “Push and Pray” Implants

The 7 mm threaded taper post, morse taper interlock and inlay design provides optimal fixation in the metatarsal bone and reduces shear forces that may cause loosening.



Restores a Smooth Articulation

Resurfacing the metatarsal head with a HemiCAP® provides a smooth articulating surface.



Maintains the Length of the 2nd Metatarsal

The system is designed to only resurface the damaged 2nd metatarsal head without removing any extra bone.



Ordering Information

Instrumentation System

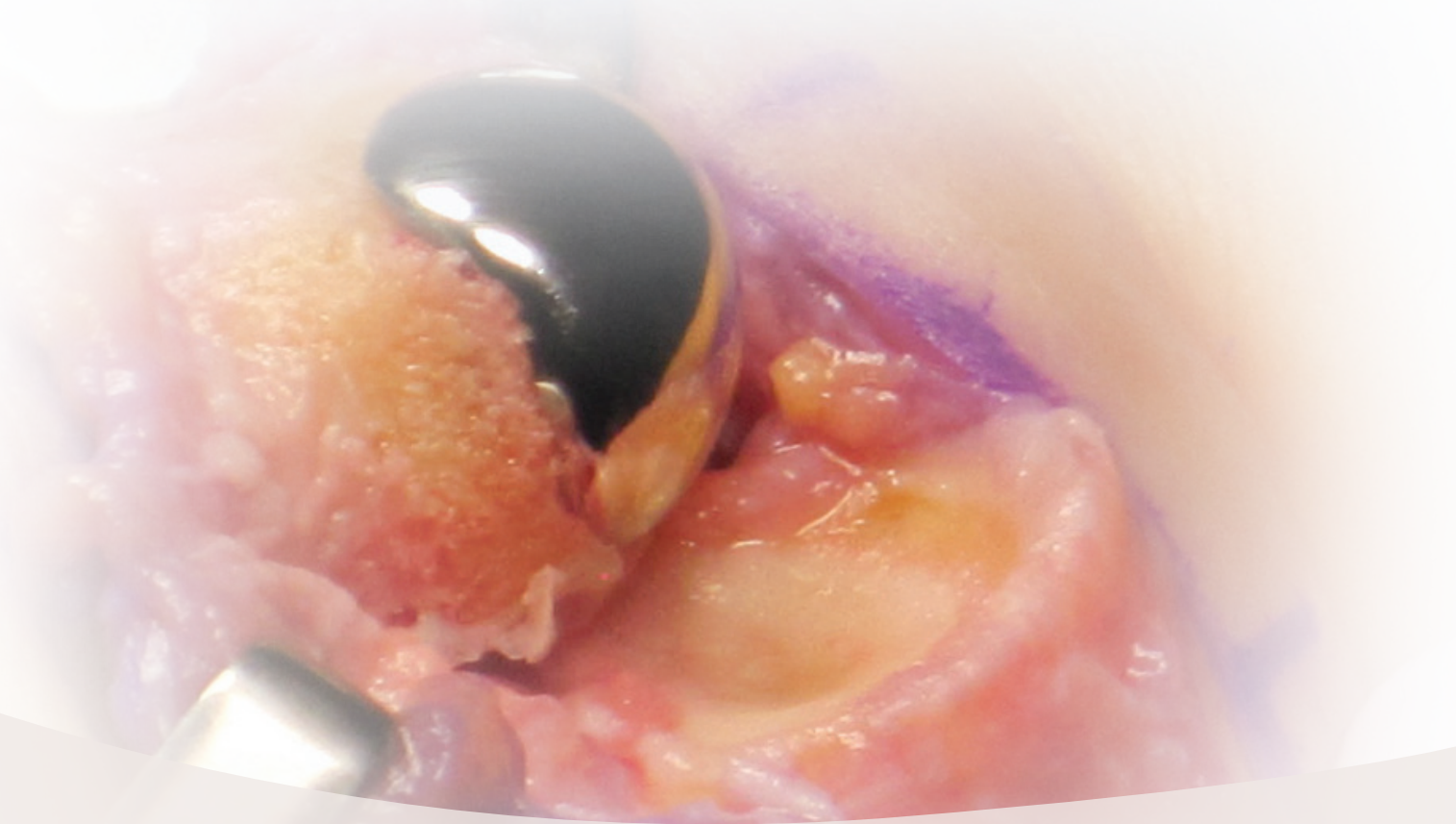
9000-3000	Instrument Kit, 12mm Toe HemiCAP
7007-1200	2.0mm Guide Pin for Metatarsal Implants

Metatarsal Articular Components

9122-1015	1.0mm x 1.5mm Offset
9122-1020	1.0mm x 2.0mm Offset
9122-1520	1.5mm x 2.0mm Offset
9122-1525	1.5mm x 2.5mm Offset
9122-2025	2.0mm x 2.5mm Offset
9122-2030	2.0mm x 3.0mm Offset
9070-0013	Taper Post, 7.0mm x 13mm

1ST MTP HEMIARTHROPLASTY with proven results

The HemiCAP^{DF} has **rock solid fixation**, a **unique metatarsal based design** and **proven clinical history** with over 45,000 MTP implants performed.



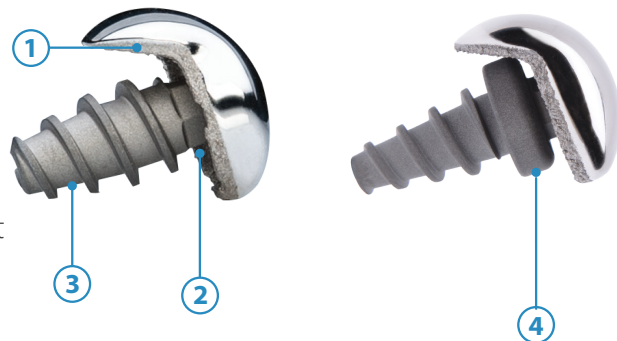
“The surgical treatment of late-stage hallux rigidus using metatarsal head resurfacing combined with important procedural considerations allows for low risk and excellent outcomes after long-term follow-up.”

*Hilario H, Garrett A, Motley T, Suzuki S, Carpenter B.
**Ten-Year Follow-Up of Metatarsal Head Resurfacing
Implants for Treatment of Hallux Rigidus.**
J Foot Ankle Surg. 2017 Sep - Oct;56(5):1052-1057*

ROCK SOLID FIXATION

Screw based fixation provides a **stable** implant

- (1) Ti Plasma spray undercoating with line to line bone to implant fit
- (2) Morse Taper interlocks the two components
- (3) Bead blasted screw surface provides superior fixation
- (4) BOSS™ Toe Fixation Post provides immediate rigid fixation where there was a large distal bone void or cyst sometimes caused by failed synthetic cartilage implants. The mid-body revolved ring on the fixation component also provides enhanced stability.



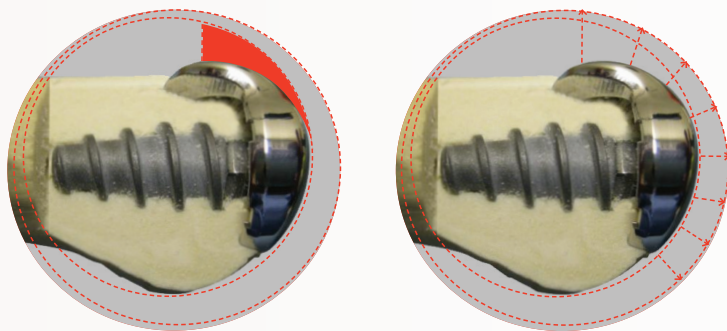
UNIQUE DESIGN

Dual implant curvatures improve dorsal roll-off

Super smooth articulating CoCr surface

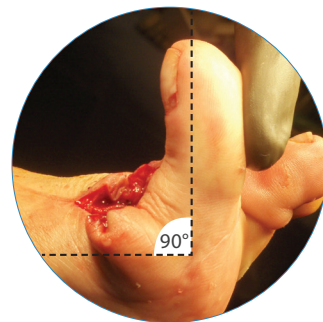
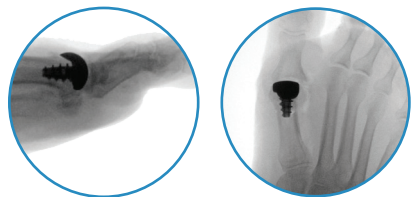
Conical fixation optimizes bone-screw interface

Standardized thread pitch for precise depth adjustment



PROVEN RESULTS

- ☒ Over 10 years of MTP clinical history
- ☒ Over 35,000 MTP implants



Ordering Information

Instrumentation System

9000-3002	Instrument Kit, ToeMotion
9CR9-211	Drill, 10.0mm, BOSS, Disposable, Sterile
7007-1200	2.0mm Guide Pin for Metatarsal Implants

Metatarsal Articular Components

9M52-1535	1.5mm x 3.5mm Offset
9M52-1545	1.5mm x 4.5mm Offset
9M52-2535	2.5mm x 3.5mm Offset
9M52-2545	2.5mm x 4.5mm Offset
9095-0018	Taper Post, 9.5mm x 18mm (for metatarsal only)
9CRS-D200	Taper Post, BOSS (for metatarsal only)

TOTAL TOE ARTHROPLASTY.

ARTICULATION. FIXATION. PRESERVATION.

The Arthrosurface® ToeMotion® System restores mobility and maintains native biomechanics using a dual curved HemiCAP DF® and a new modular tray-style phalangeal implant with a threaded baseplate. Fourth generation fixation components provide stable constructs on both sides of the joint.

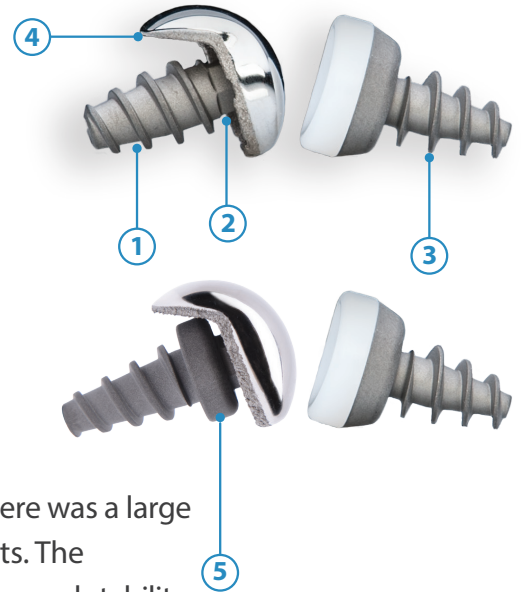


- ☒ Inlay arthroplasty provides stability and preserves bone
- ☒ Rock-solid fixation with morse taper interlock
- ☒ Long-term clinical history with over 45,000 MTP implants performed
- ☒ Single tray system with multiple implant options

ROCK SOLID FIXATION

Designed to address the primary failure mode of MTP implants-loosening.

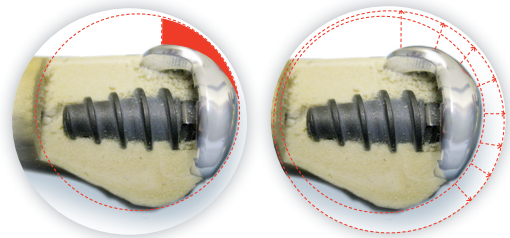
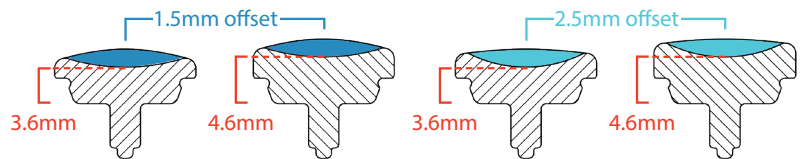
- (1) Bead blasted MTP screw surface provides superior fixation
- (2) Morse Taper / Conical fixation interlocks the two components
- (3) 4th generation threaded metatarsal and phalangeal fixation
- (4) Ti Plasma spray undercoating with line to line bone to implant fit
- (5) BOSS™ Toe Fixation Post provides immediate rigid fixation where there was a large distal bone void or cyst caused by failed synthetic cartilage implants. The mid-body revolved ring on the fixation component also provides enhanced stability.



UNIQUE DESIGN

Engineered to reproduce the unique kinematics of the MTP joint.

- ✓ Poly inserts available with multiple offsets & thicknesses
- ✓ Standardized thread pitch for precise depth adjustment
- ✓ Dual MTP implant curvatures improves dorsal roll-off



Ordering Information

Metatarsal Articular Components

9M52-1535	1.5mm x 3.5mm Offset
9M52-1545	1.5mm x 4.5mm Offset
9M52-2535	2.5mm x 3.5mm Offset
9M52-2545	2.5mm x 4.5mm Offset
9095-0018	Taper Post, 9.5mm x 18mm (for metatarsal only)
9CRS-D200	Taper Post, BOSS (for metatarsal only)

Proximal Phalanx Articular Components

9P15-PA01	Phalangeal Insert, 1.5 mm Offset - 01 (3.6 mm Thick)
9P15-PA02	Phalangeal Insert, 1.5 mm Offset - 02 (4.6 mm Thick)
9P15-PB01	Phalangeal Insert, 2.5 mm Offset - 01 (3.6 mm Thick)
9P15-PB02	Phalangeal Insert, 2.5 mm Offset - 02 (4.6 mm Thick)
9P15-S180	Fixation Component, Phalangeal Implant

Instrumentation System

9000-3002	Instrument Kit, ToeMotion
9CR9-211	Drill, 10.0mm, BOSS, Disposable, Sterile
7007-1200	2.0mm Guide Pin for Metatarsal Implants





Ruth received an Arthrosurface ToeMotion® Implant and
is back to her active lifestyle doing what she loves!

#STAYACTIVE®